

# Add / Install Microsoft Store on Windows 10 LTSC or LTSCB Editions

In this video-article tutorial, I'll be showing you how you can install or add Microsoft Store on windows 10 LTSC or LTSCB Editions.

On a fresh installation of Windows 10 LTSC or LTSCB Editions of Windows, Microsoft Store is not made available unlike other Windows 10 editions such as Home and Pro.

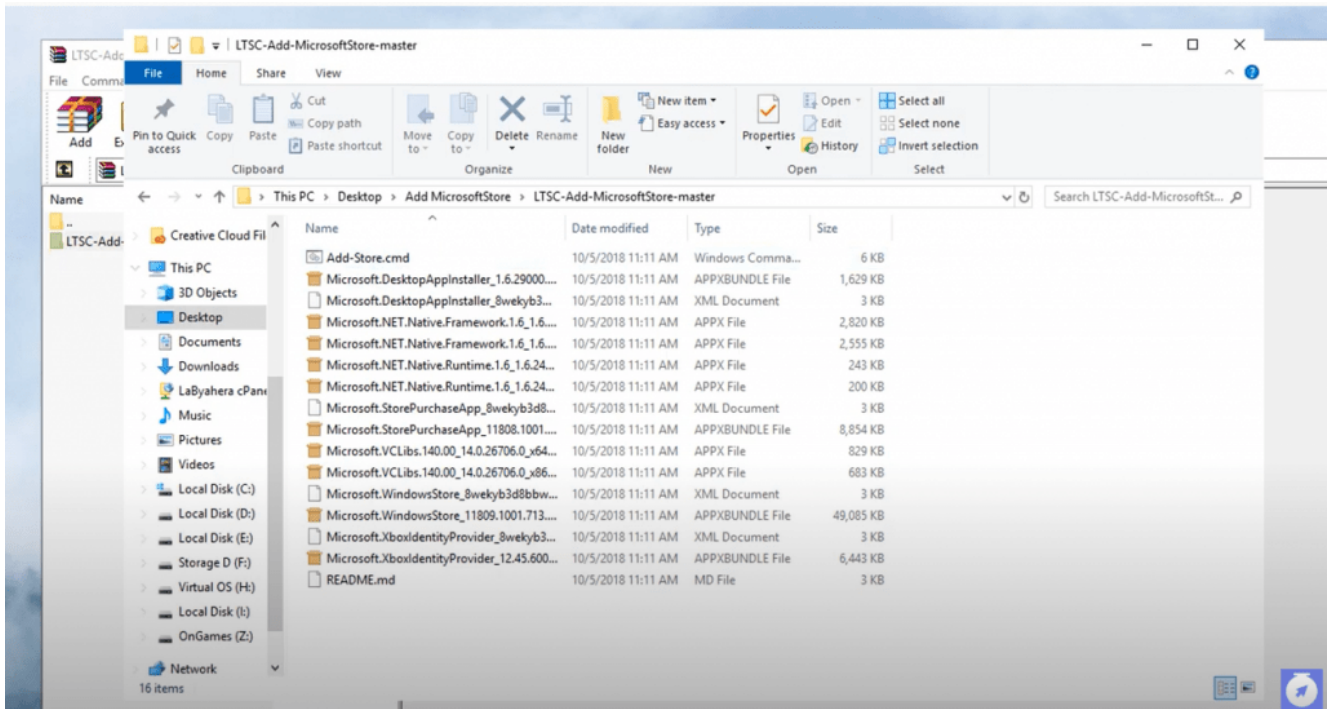
Follow along on the video tutorial posted below, and the download the required resources using the download button located below.

## Video Tutorial

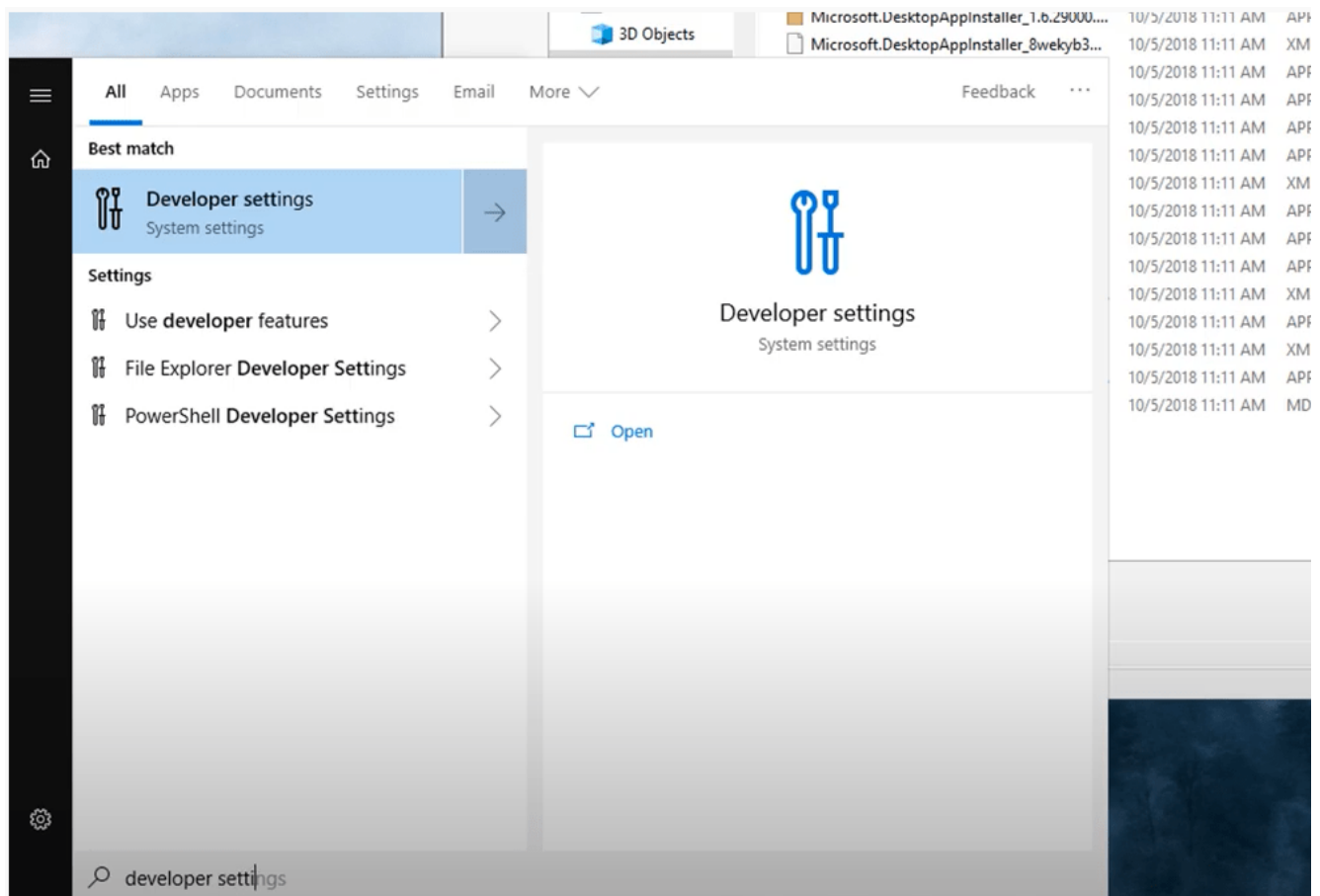
<https://www.youtube.com/watch?v=NcvRut5SPZ8>Video can't be loaded because JavaScript is disabled: [Add / Install Microsoft Store on Windows 10 LTSC or LTSCB Editions \(https://www.youtube.com/watch?v=NcvRut5SPZ8\)](https://www.youtube.com/watch?v=NcvRut5SPZ8)

## Step-by-Step Guide

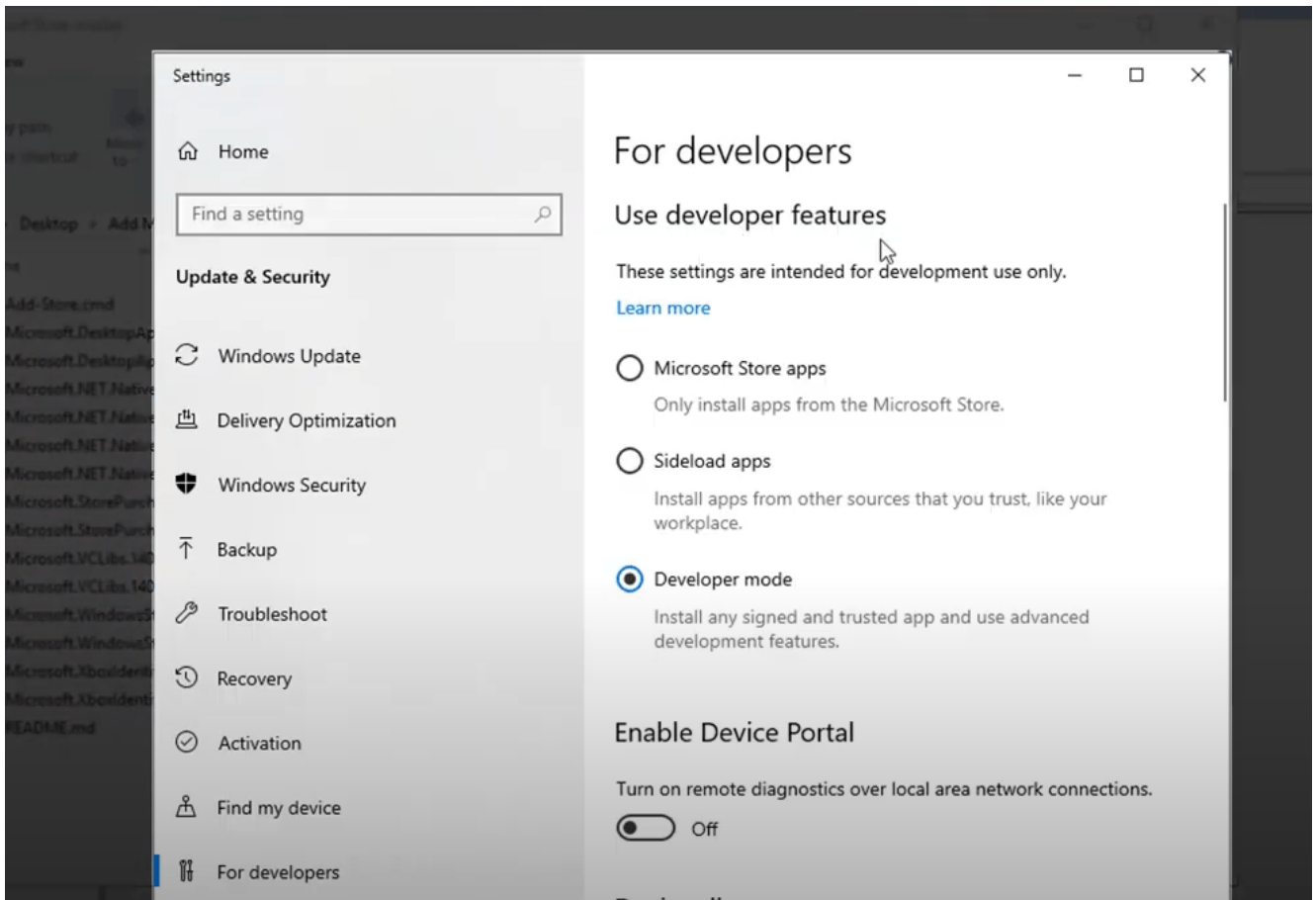
- To install Microsoft Store on Windows 10 LTSC or LTSCB editions, download this Microsoft Store installer and then extract it on your desktop: "[Download LTSC Microsoft Store Installer](#) or [Download LTSCB Microsoft Installer](#)".



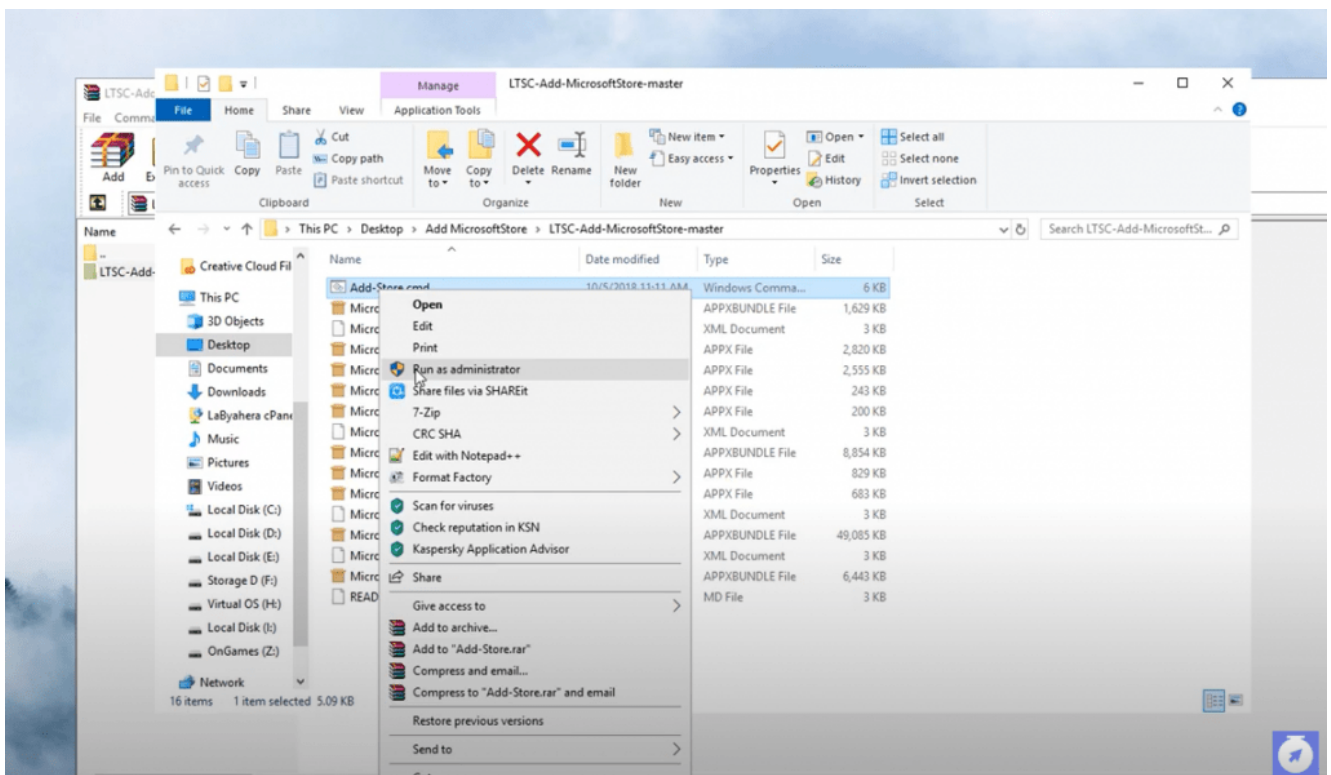
- Extract the archive, then open up the folder until you see the Add-Store.cmd



- Open up start menu, look for developer settings.



- Choose the “Developer mode” under the “Use developer features”. Hit the yes button once prompt shows up.



- Go back to the extracted archive / folder. Right click

the add-store.cmd and run it as administrator.

- Wait for it to finish automatically installing Microsoft Store on your LTSC/LTSB system.

### **Related Articles:**

- [How to Improve Your Google Meet Video Quality](#)
- [Ultimate Guide: How to fix Wifi / Packet Loss / Slow Internet](#)